

The image shows the Eckstein School in Glendale, a historic white building with a red-tiled roof and a prominent bell tower. The building features arched windows and a sign that reads "ECKSTEIN SCHOOL 1928". The scene is set against a backdrop of trees and a clear sky.

2021 Preservation Awards

Celebrating CPA's Collaboration with
the Eckstein Cultural Arts Center

The Eckstein School in Glendale

The image features a dark silhouette of a city skyline against a light blue background. The skyline includes a prominent building with a large dome. Below the skyline, a complex network of tree roots is visible, extending across the width of the image. The text 'URBAN ROOT' is overlaid on the skyline in large, white, bold, sans-serif capital letters.

URBAN ROOT

DIGGING INTO LITTLE KNOWN STORIES OF URBAN

“Lost Voices of Cincinnati” Podcast

For Outstanding
Achievement in Education



Lost Voices of Cincinnati Podcast

FIND URBAN ROOTS ON...



URBAN ROOTS PODCAST BLOG



16 July 2021

South Cumminsville: For the Love of the Neighborhood



3 July 2021

Avondale: It Takes a Village

*The Only CPA Award Winner That You
Can Download Today!*



“Avondale: It Takes a Village” on the
Lost Voices of Cincinnati Podcast

IMPORTANT TERMS IN HISTORY

Redlining

A discriminatory housing practice perpetuated by the Federal government where arbitrary areas were marked by red shading on a map in order to deem black neighborhoods 'high-risk' and unfit for investment based on race. The tactic was used by banks, insurance companies, savings and loan associations, and other financial services companies to refuse African Americans loans and mortgages.

OUTLAWED BY THE FAIR HOUSING ACT OF 1968
[PART OF THE CIVIL RIGHTS ACT]

As defined by Blackpast.org

IMPORTANT TERMS IN HISTORY

Blockbusting

The discriminatory housing practice where real estate agents and loan serviers would draw African American homeowners into previously all white neighborhoods in order to spark rapid white flight and housing price decline. Real estate speculators have historically used this technique to profit from prejudice-driven market instability.

OUTLAWED BY THE FAIR HOUSING ACT OF 1968
[PART OF THE CIVIL RIGHTS ACT]

As defined by Blackpast.org



“Looking back so we can move forward”



Capturing Community Voices for Urban Roots Podcast

Congratulations to:

Deqah Hussein-Wetzel, co-host & producer
Vanessa Maria Quirk, co-host & producer
Connor Lynch, editor & producer
Invest In Neighborhoods





John Paul McEwan

Preservation
Leadership Award

John Paul McEwan



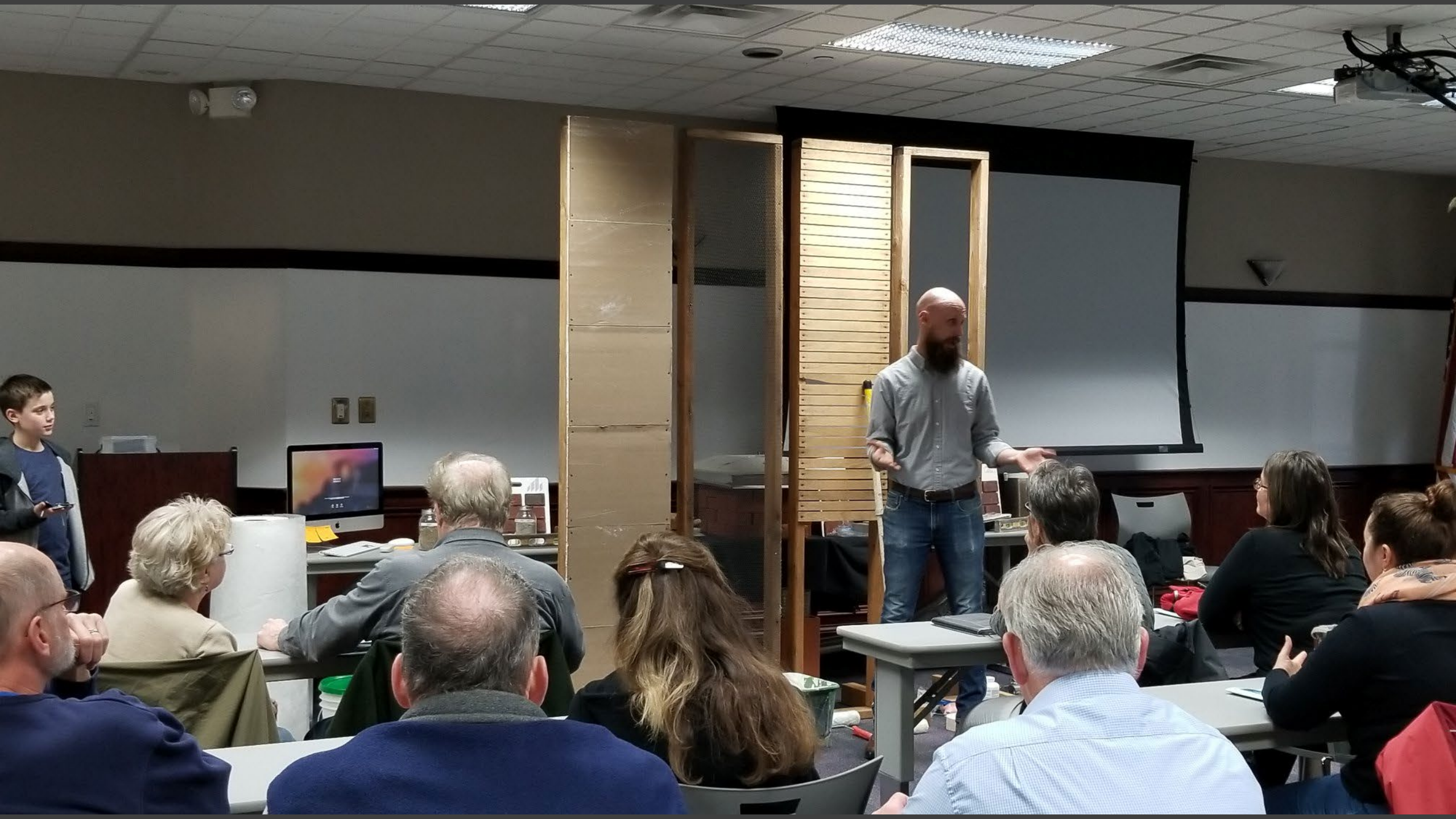
John Paul McEwan



John Paul McEwan



John Paul McEwan





John Paul McEwan



Congratulations to:
John Paul McEwan
for Excellence in
Preservation Leadership

John Paul McEwan



Music Hall Finial Restoration Project

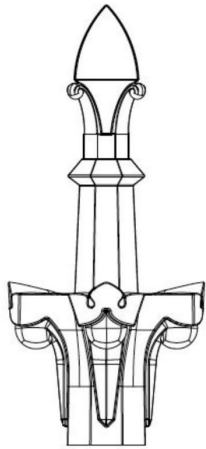
For Outstanding
Achievement in
Restoration

Music Hall Finial
Restoration Project

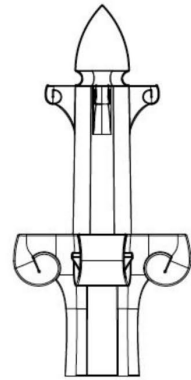


The FINIAL RESTORATION PROJECT

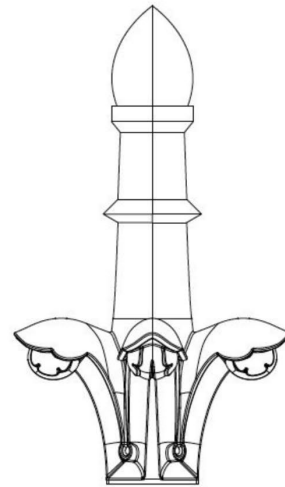
FRIENDS of MUSIC HALL



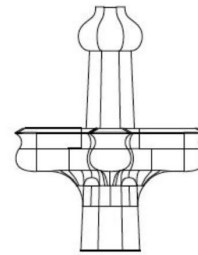
Type A
Rose Window
3' - 9¹/₈" H. x 1' - 8¹/₈" W.



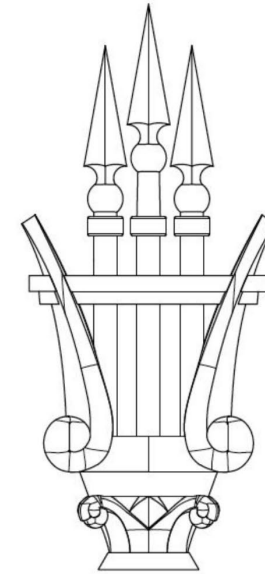
Type B
North & South Corridors
3' - 2" H. x 1' - 6¹/₈" W.



Type C
North & South Halls
4' - 1" H. x 2' - 6³/₈" W.



Type D
West Façade
North & South Corridors
2' - 1" H. x 1' - 7⁷/₈" W.



Lyre with 3 Spikes
4' - 10" H. x 2' - 2" W.
Tallest Middle Spike: 2' - 3⁷/₈"

.85 + 220



Music Hall Finials



Music Hall Finials

Music Hall Finial
Restoration Project





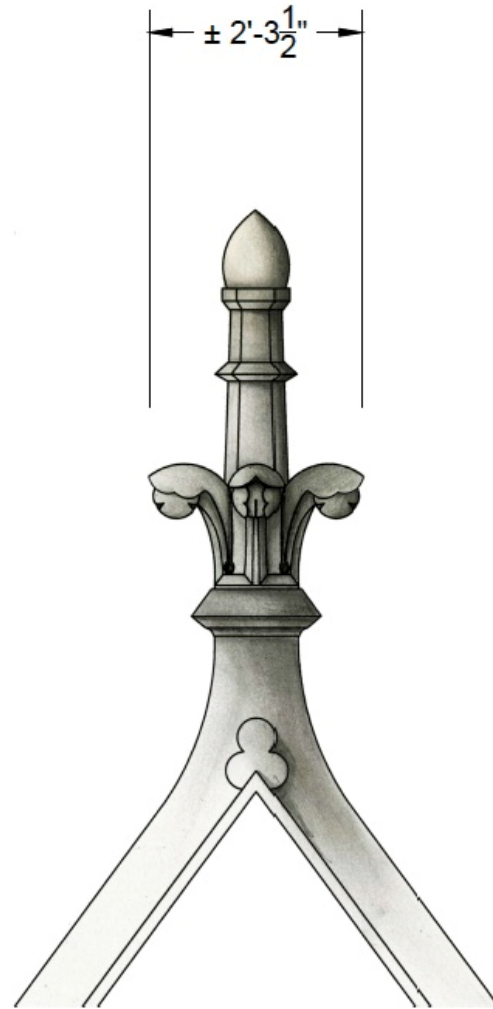
Music Hall Finials



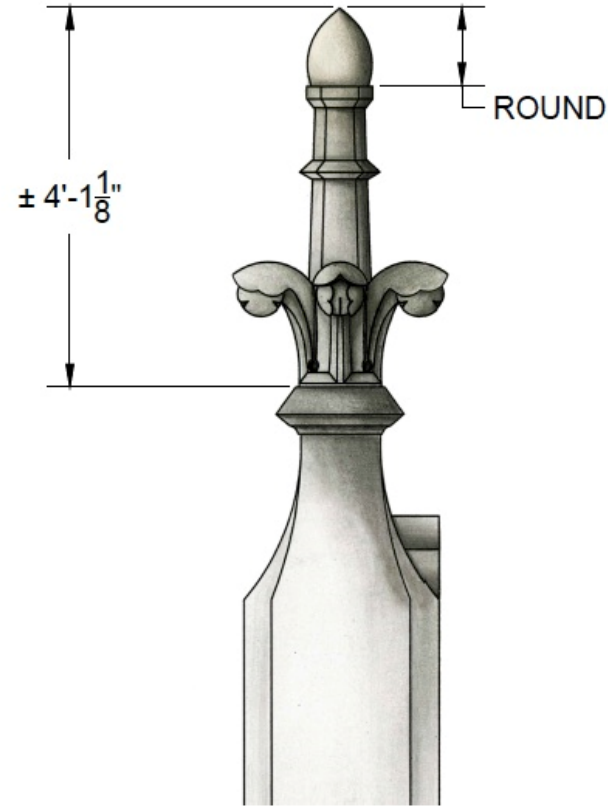
1 HISTORIC PHOTO
 PHOTO Source: <https://www.loc.gov> SCALE: Not to Scale



2 HISTORIC PHOTO
 PHOTO Source: <https://www.loc.gov> SCALE: Not to Scale



3 FRONT ELEVATION - TYPE C
 ELEVATION SCALE: 3/4" = 1'-0"

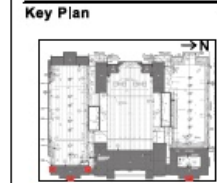


4 SIDE ELEVATION - TYPE C
 ELEVATION SCALE: 3/4" = 1'-0"



Project
 Cincinnati Music Hall
 Cincinnati, OH
 No: 4-6-16066

Address
 1241 Elm St
 Cincinnati, OH 45202
 USA



Legal
 These drawings are submitted for review and approval by the architect of record and are not to be used for construction unless and until they are signed and sealed by the architect of record as part of the construction documents.

Sheet Information
 Page Size: 11" x 17"
 Drawn by: KE
 Checked by: EN
 File: 2017.01_1617_2.mxd 2/16/2017 2:05:00 PM

Issued/Revised

Date	Description
2017.10.06	Submit
2017.11.20	Revise
2017.12.16	Revise

Sheet Title
 TYPE C - STONE
 FINIALS

Sheet No.
 Z205



Music Hall Finials



Music Hall Finials

Music Hall Finial
Restoration Project





Congratulations to:

The City of Cincinnati
Music Hall Restoration Corporation
Friends of Music Hall
Architect Ken Jones
SSRG
EverGreene Architectural Arts
Arya Design



Restoration of the E. Cort Williams House, 1885

Restoration Award

E. Cort Williams House, 1885



E. Cort Williams House, 1885



E. Cort Williams House, 1885





E. Cort Williams House, 1885



E. Cort Williams House, 1885



E. Cort Williams House, 1885





E. Cort Williams House, 1885



E. Cort Williams House, 1885



E. Cort Williams House, 1885



E. Cort Williams House, 1885



Congratulations to:

Lauren Kitchen, Owner

Ken Jones & Associates

Holtman Design, LLC

Douglas Contracting

Morningstar Cabinetry

Ohio Marble and Tile

Schoch Tile & Carpet

Kurelis Interiors

Richard Butz Design Studio



Sol design + consulting Offices & Apartments

Award for
Sustainably and
Preservation

Sol design + consulting Offices & Apartments



Before

Sol design + consulting

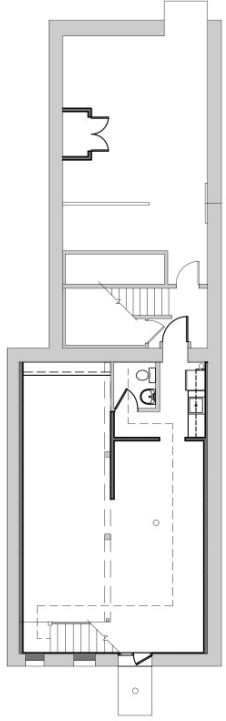


After

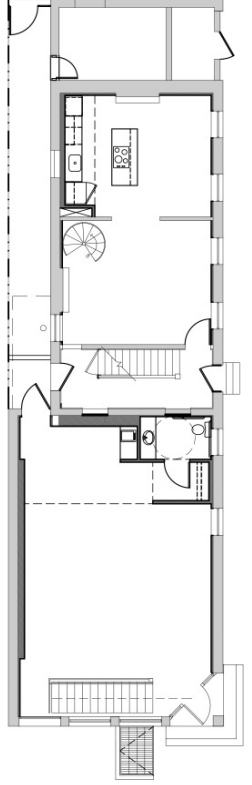




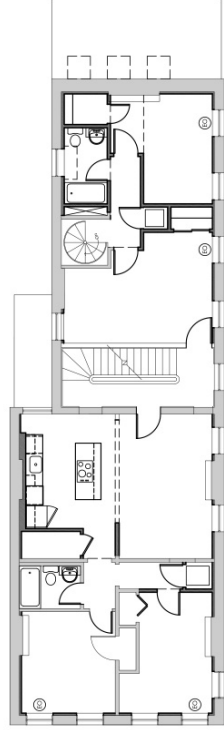




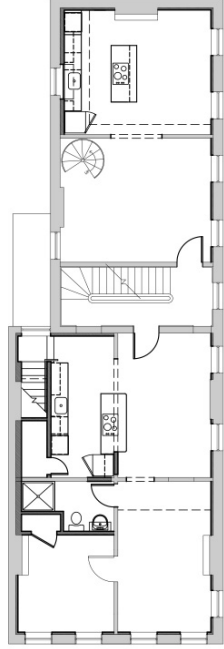
BASEMENT FLOOR PLAN (NOT TO SCALE)



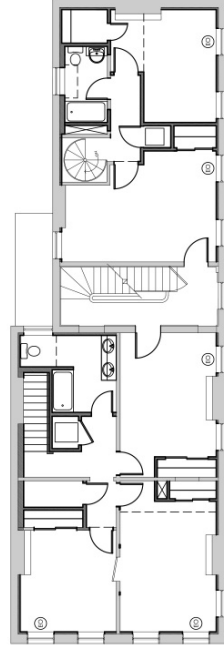
FIRST FLOOR PLAN (NOT TO SCALE)



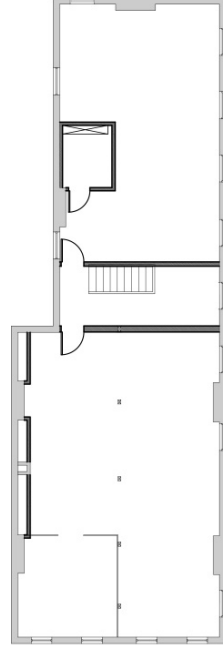
SECOND FLOOR PLAN (NOT TO SCALE)



THIRD FLOOR PLAN (NOT TO SCALE)



FOURTH FLOOR PLAN (NOT TO SCALE)












ATTIC FLOOR PLAN (NOT TO SCALE)



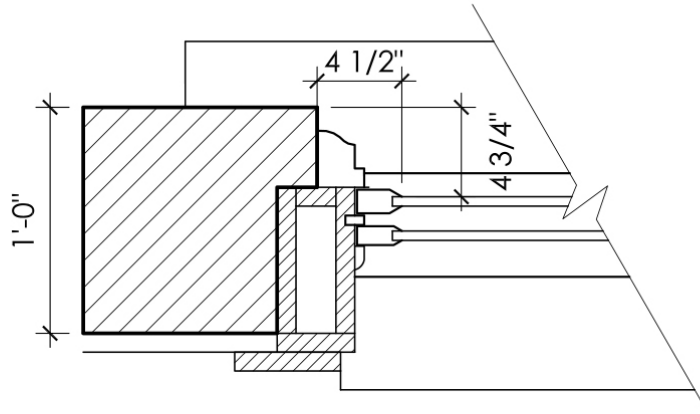
501 E 13th Street

LEED for Homes®

Total Points	90
 Location & Linkages	9
 Sustainable Sites	11
 Water Efficiency	6
 Energy & Atmosphere	35
 Materials & Resources	11
 Indoor Air Quality	8
 Innovation & Design	9
 Awareness & Education	1
 Home Size Adjustment	-4

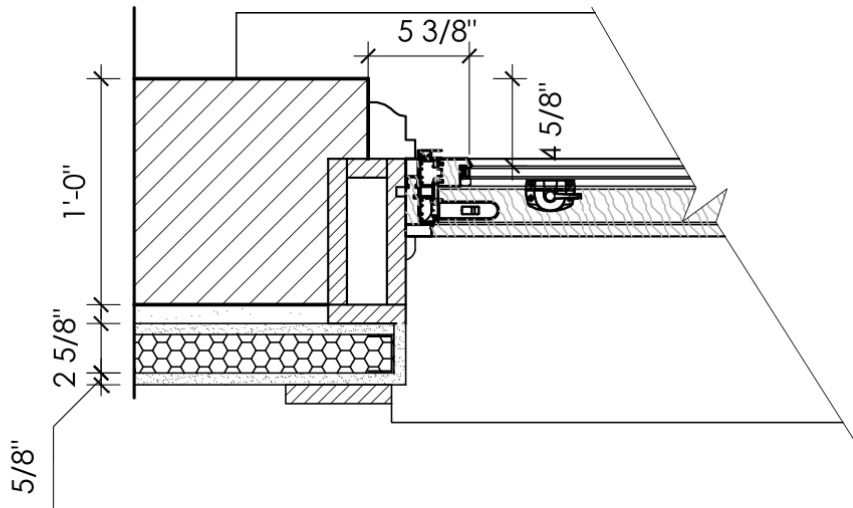
PLATINUM

SOL PENDLETON HISTORIC RENOVATION



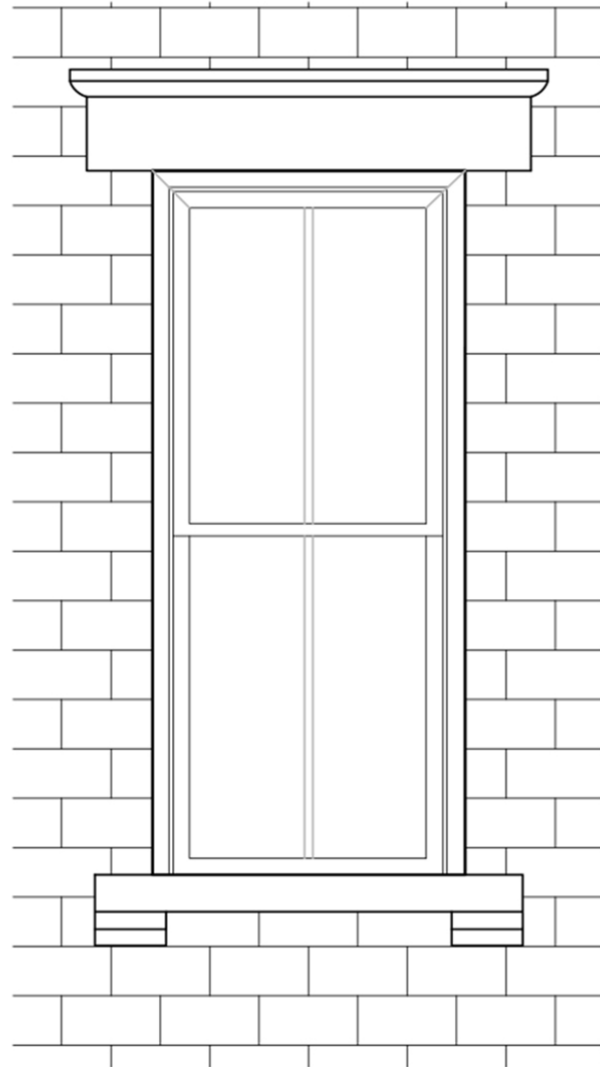
EXISTING WINDOW

SCALE: 1 1/2"=1'-0"



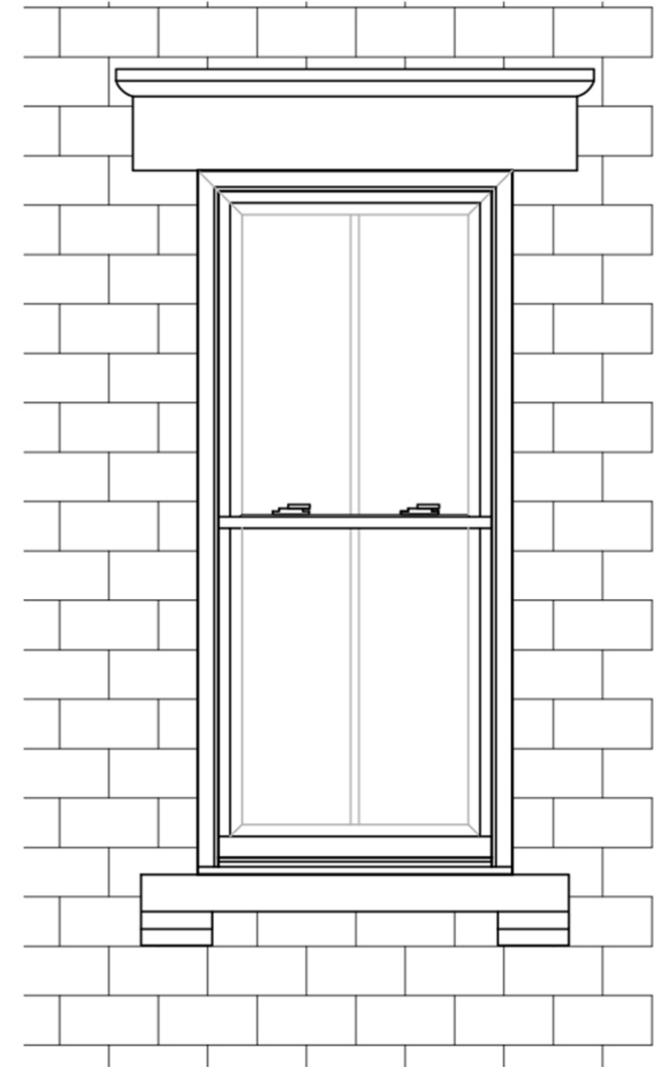
PROPOSED WINDOW

SCALE: 1 1/2"=1'-0"



EXISTING WINDOW

SCALE: NTS



PROPOSED WINDOW

SCALE: NTS





Congratulations to:

Sol Pendleton Arts LLC

Sol design + consulting

Architect: Sanyog Rathod, AIA

Contractor: The Model Group



The Standard in Covington

For Outstanding
Achievement in
Adaptative Reuse

The Standard



The Standard



The Standard Photo - Credit: Savana Willhoite



The Standard Photo - Credit: Savana Willhoite



The Standard





The Standard Photo - Credit: Savana Wilmore



The Standard



The Standard Photo - Credit: Savana Willhoite



The Standard Photo - Credit: Savana Willhoite



The Standard



The Standard



Congratulations to:

Emily Wolff and Paul Weckman
Hub & Weber Architects

Marilyn Scripps

Dan Biedenharn

City of Covington Staff

Butch Ostendorf, Former Owner





Century Design Workshop

Award for Adaptive Reuse

Century Design Workshop





Century Design Workshop



Century Design Workshop





Century Design Workshop





Century Design Workshop





Century Design Workshop



Century Design Workshop



Congratulations to:

Michael Miritello & Susannah Tisue
Ron and Cindy Tisue
Walnut Hills Redevelopment Found.



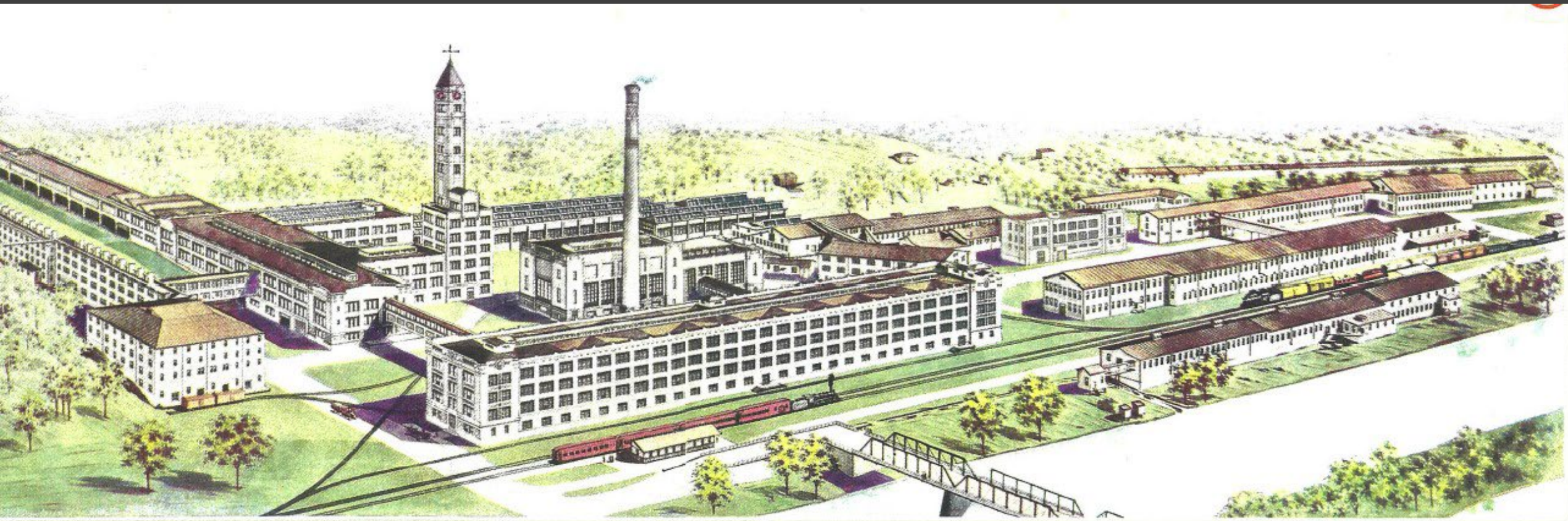
Peters Cartridge Factory Apartments

Award for Adaptive
Reuse

Peters Cartridge Factory Apartments



Peters Cartridge Factory Apartments



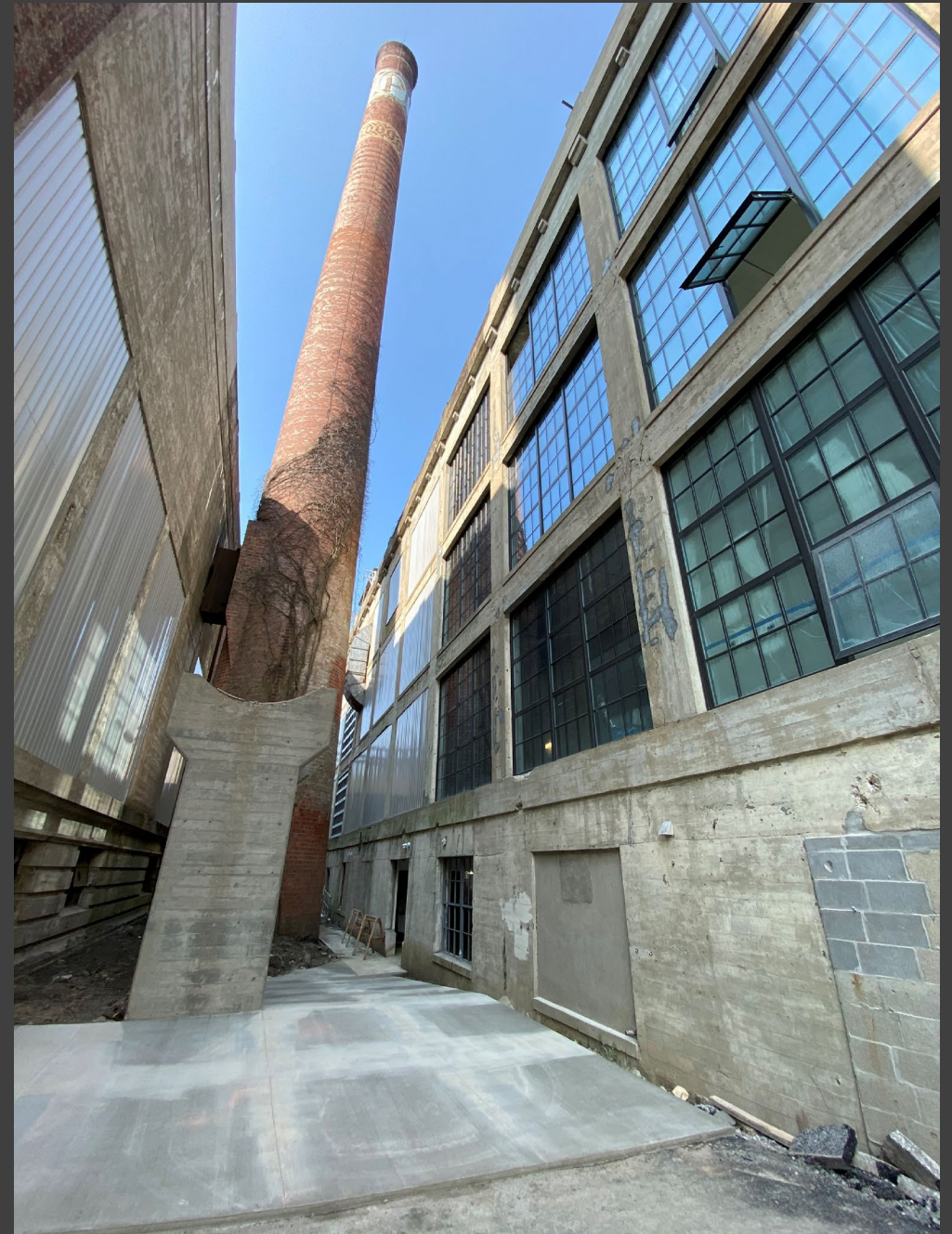
WORKS OF THE PETERS CARTRIDGE COMPANY
LOCATED AT KINGS MILLS, OHIO -- ABOUT TWENTY-FIVE MILES FROM CINCINNATI



Peters Cartridge Factory Apartments – Before



Peters Cartridge Factory Apartments - Before



Peters Cartridge Factory Apartments



Peters Cartridge Factory Apartments



Peters Cartridge Factory Apartments



Peters Cartridge Factory Apartments



Congratulations to:

Developer: Bloomfield/Schon

Architecture/Design: Bloomfield/Schon



Courtyard by Marriott at the Ingalls Building

Award for Adaptive Reuse

The Ingalls Building



The Ingalls Building



The Ingalls Building





The Ingalls Building

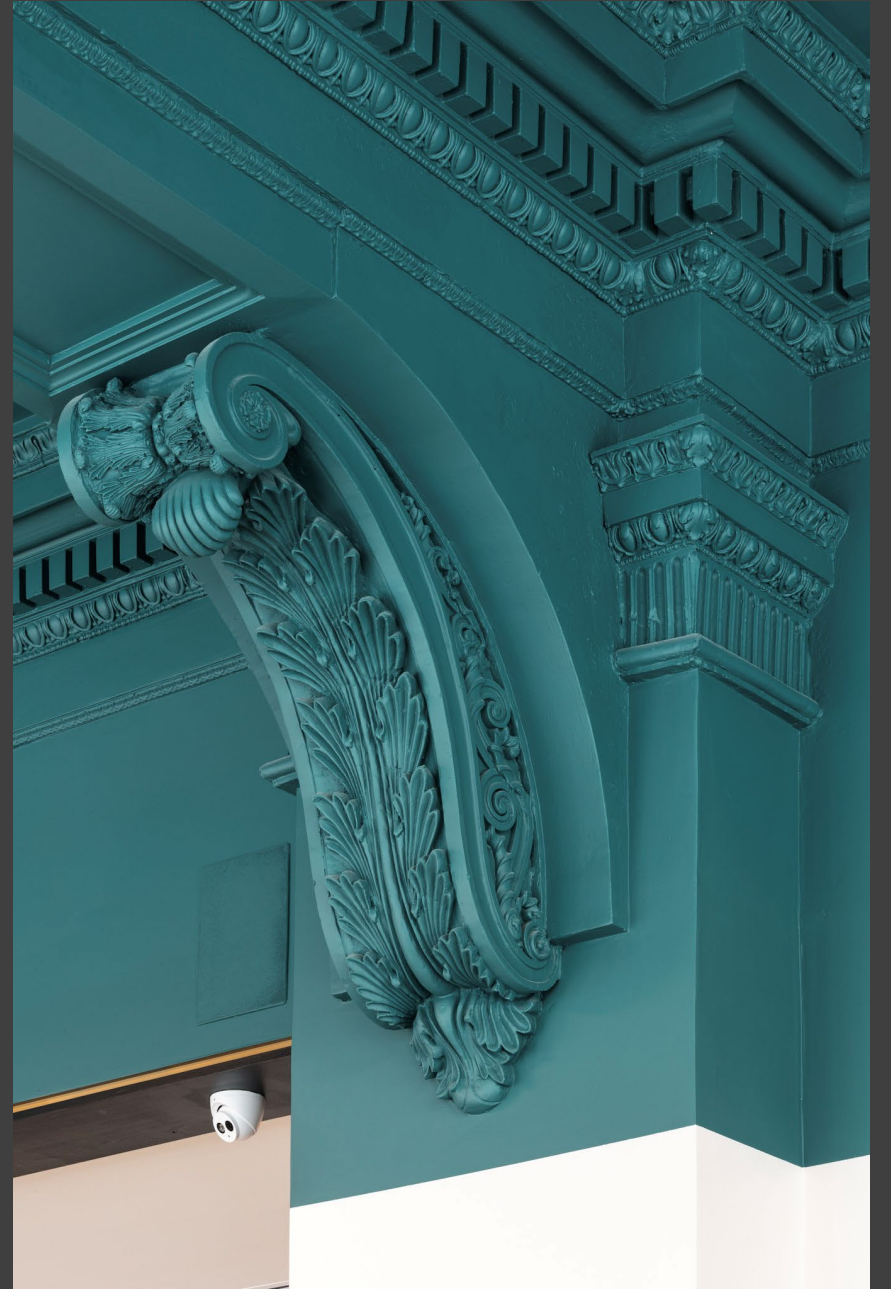
NATIONAL HISTORIC
CIVIL ENGINEERING LANDMARK



INGALLS BUILDING

ASCE 1973

The Ingalls Building





The Ingalls Building



Reception desk with a white marble top and a dark wood-paneled wall behind it. The wall features a chevron pattern of dark wood and light-colored panels. A sign on the desk reads "MARRIOTT BONVOY".

Reception desk with a white marble top and a dark wood-paneled wall behind it. A sign on the desk reads "MARRIOTT BONVOY".

Seating area featuring a blue armchair, a dark grey ottoman, and a small round table with two blue chairs. A floor lamp is visible near the window.

Large window overlooking the street at night. The view shows a city street with a sign that reads "One East Fourth Street".





The Ingalls
Building



The Ingalls Building





The Ingalls Building



Congratulations to:

Courtyard Marriott / Ingalls Building
SHREE

Luminaut Architects

CMTA and Thorsen Baker

HGC Construction

Houston Brothers

Stewart Ironworks

Valley Interior Systems Inc.

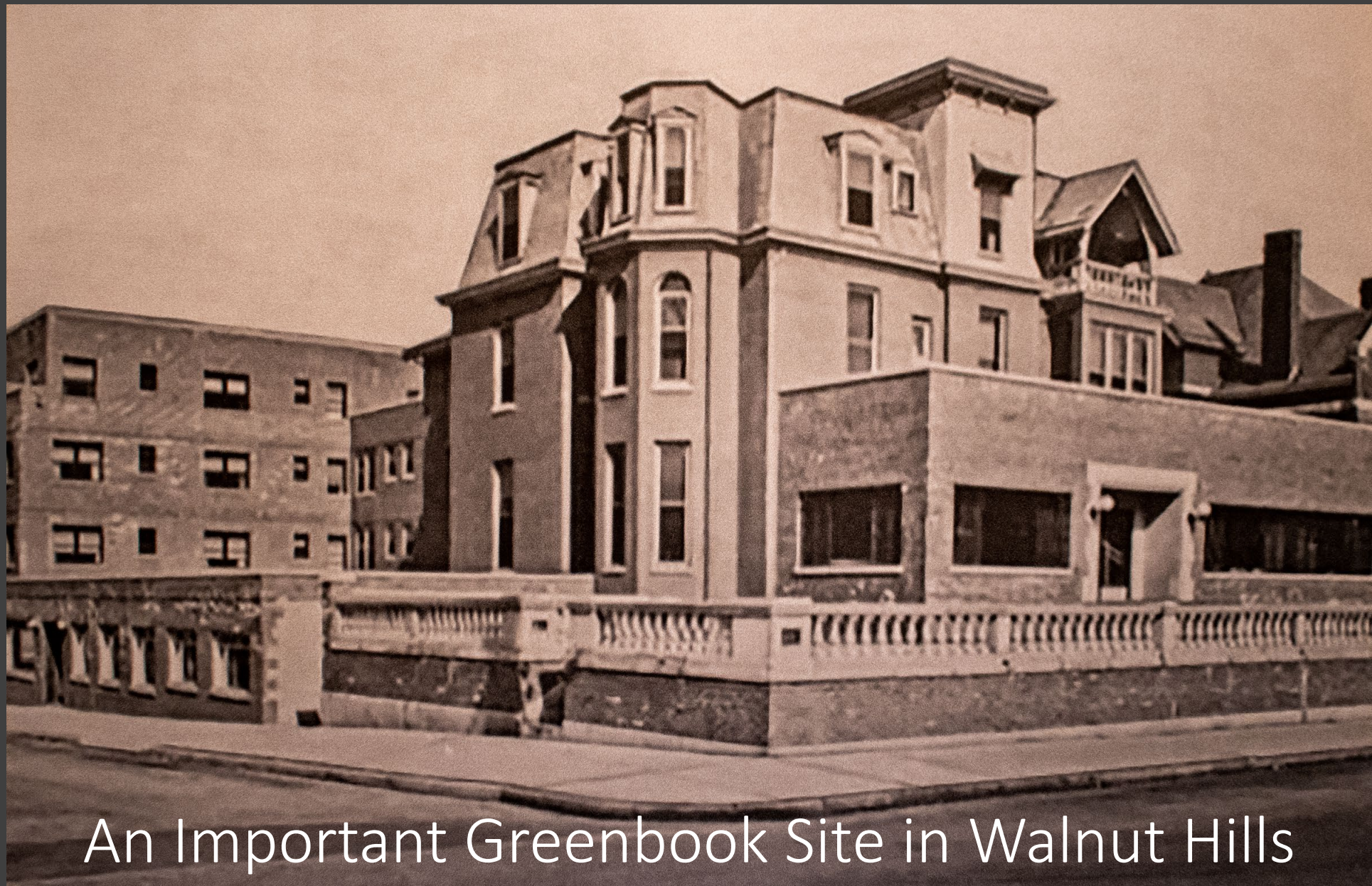
Ingalls Building



The Manse Apartments

Award for Adaptive Reuse

The Manse Apartments



An Important Greenbook Site in Walnut Hills

The Manse Apartments



The Manse Apartments



The Manse Apartments

Special Thanks to Our Partners:



Walnut Hills
Redevelopment
Foundation



A Community Effort Creating Quality Places to Live

The Manse Apartments



Manse Annex



Manse Hotel

The Manse Apartments



1916 - Notable Cincinnati Jacob Schindler, who was committed to developing dignified affordable housing for low-income families, particularly African Americans, built the Gordon Hotel on the corner of Chapel and Hubbard in Walnut Hills to accommodate African Americans traveling to Cincinnati.

1921 - Inspired in part by Schindler, Horace Sudbuth purchased hotel Barry on Chapel Street. A prominent African American entrepreneur, barber and real estate developer, Sudbuth invested \$200,000 over the course of nearly 20 years (the equivalent of \$4.8M in 2022) in a massive renovation to expand and upgrade the hotel.

1940 - The Manse Hotel was listed in the 4th edition of the Negro Manual Green Book, a national guidebook advising African American travelers on where they would be welcomed.

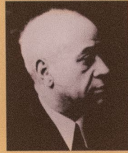
1950 - The Manse Hotel opened to great fanfare on Easter Sunday. It included a 24-hour coffee shop, a ballroom, a lounge, a conference room, a banquet hall and a swimming pool.



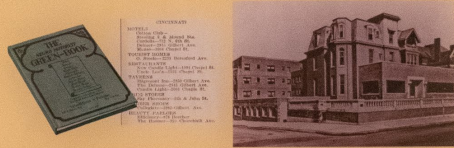
The Manse Apartments



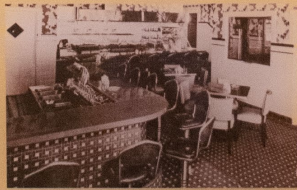
1916 - Notable Cincinnati Jacob Schmidlapp, who was committed to developing dignified affordable tenements for low-income families, particularly African Americans, built the Gordon Hotel on the corner of Chapel and Ashland in Walnut Hills to accommodate African Americans traveling to Cincinnati.



1931 - Inspired in part by Schmidlapp, Horace Sudduth purchased Hotel Terry on Chapel Street. A prominent African American entrepreneur, banker and real estate developer, Sudduth invested \$500,000 over the course of nearly 20 years (the equivalent of \$4.8M in 2020) in a massive renovation to expand and upgrade the hotel.



1940 - The Manse Hotel was listed in the 4th edition of the Negro Motorist Green Book, a national guidebook advising African American travelers on where they would be welcomed.



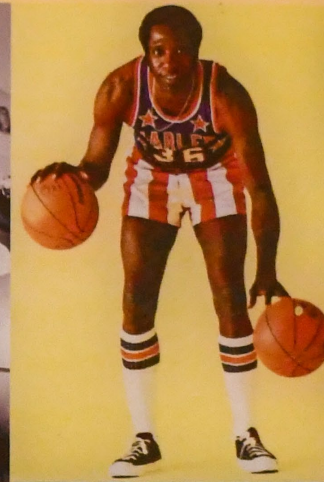
1950 - The Manse Hotel opened to great fanfare on Easter Sunday. It included a 24-hour coffee shop and a formal ballroom where conferences, banquets and societal events were held.



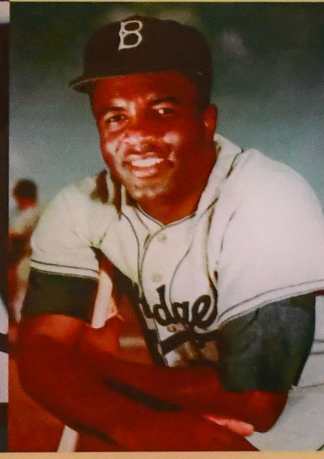
The Tuskegee Airman
James Brown



The Harlem Globetrotters
Jackie Robinson



Duke Ellington
Count Basie



Celebrating History of the Manse



New Construction Blends with the Historic

The Manse Apartments



Community Room Before



Community Room After

The Manse Apartments



The Monroe Apartments

Congratulations to:

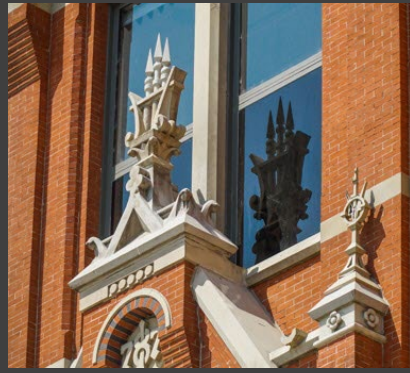
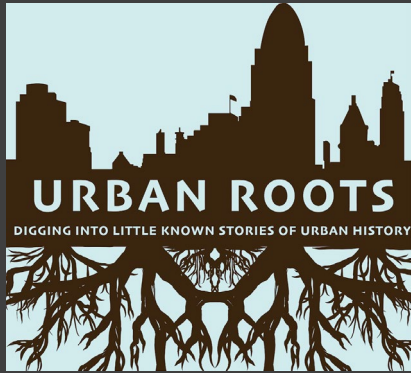


The Model Group
Episcopal Retirement Services

City Studios Architects
Walnut Hills Redevelopment
Foundation

Cincinnati City of Cincinnati
Ohio Housing Finance Agency
Ohio Capital Corporation for Housing
Key Bank, Fifth Third Bank & FLHB

2021 Preservation Awards



Congratulations to All the Winners!

*Thank You for Supporting
CPA's Annual Fund!*

www.cincinnatiipreservation.org

On your way home you can see the exterior
of the Eckstein Cultural Arts Center at
42 Washington Avenue

